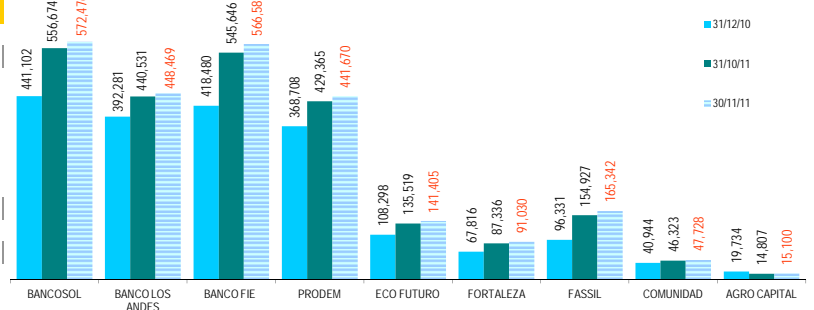


EVOLUCION POR ENTIDAD (CIFRAS EN MILES DE DOLARES)

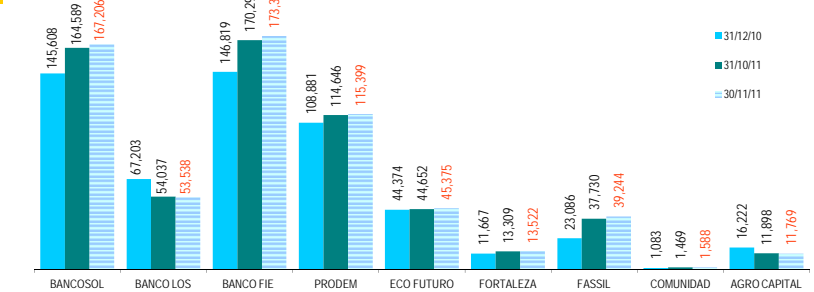
ENTIDAD	CARTERA BRUTA			VARIACION MES		VARIACION Dic/10-Nov/11	
	31/12/10	31/10/11	30/11/11	MONTO	%	MONTO	%
BANCOSOL	441,102	556,674	572,476	15,802	2.8%	131,374	29.8%
BANCO LOS ANDES	392,281	440,531	448,469	7,938	1.8%	56,188	14.3%
BANCO FIE	418,480	545,646	566,588	20,942	3.8%	148,108	35.4%
PRODEM	368,708	429,365	441,670	12,306	2.9%	72,962	19.8%
ECO FUTURO	108,298	135,519	141,405	5,887	4.3%	33,107	30.6%
FORTALEZA	67,816	87,336	91,030	3,693	4.2%	23,214	34.2%
FASSIL	96,331	154,927	165,342	10,415	6.7%	69,011	71.6%
COMUNIDAD	40,944	46,323	47,728	1,405	3.0%	6,784	16.6%
AGRO CAPITAL	19,734	14,807	15,100	292	2.0%	-4,634	-23.5%
TOTAL ASOFIN (2)	1,953,694	2,411,128	2,489,808	78,680	3.3%	536,114	27.4%
BANCOS (1)	4,084,884	4,890,916	4,957,496	66,580	1.4%	872,612	21.4%
COOP ABIERTAS	434,078	500,369	509,425	9,056	1.8%	75,347	17.4%
MUTUALES	314,560	363,284	368,363	5,079	1.4%	53,804	17.1%

CARTERA BRUTA (MILES DE \$US)



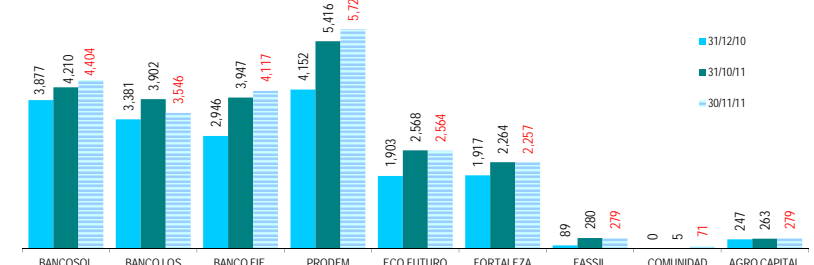
ENTIDAD	N° DE CLIENTES DE CREDITO			VARIACION MES		VARIACION Dic/10-Nov/11	
	31/12/10	31/10/11	30/11/11	N°	%	N°	%
BANCOSOL	145,608	164,589	167,206	2,617	1.6%	21,598	14.8%
BANCO LOS ANDES	67,203	54,037	53,538	-499	-0.9%	-13,665	-20.3%
BANCO FIE	146,819	170,298	173,309	3,011	1.8%	26,490	18.0%
PRODEM	108,881	114,646	115,399	753	0.7%	6,518	6.0%
ECO FUTURO	44,374	44,652	45,375	723	1.6%	1,001	2.3%
FORTALEZA	11,667	13,309	13,522	213	1.6%	1,855	15.9%
FASSIL	23,086	37,730	39,244	1,514	4.0%	16,158	70.0%
COMUNIDAD	1,083	1,469	1,588	119	8.1%	505	46.6%
AGRO CAPITAL	16,222	11,898	11,769	-129	-1.1%	-4,453	-27.5%
TOTAL ASOFIN (2)	564,943	612,628	620,950	8,322	1.4%	56,007	9.9%
BANCOS (1)	184,827	S/D	S/D	S/D	S/D	S/D	S/D
COOP ABIERTAS	94,760	S/D	S/D	S/D	S/D	S/D	S/D
MUTUALES	19,251	S/D	S/D	S/D	S/D	S/D	S/D

N° DE CLIENTES



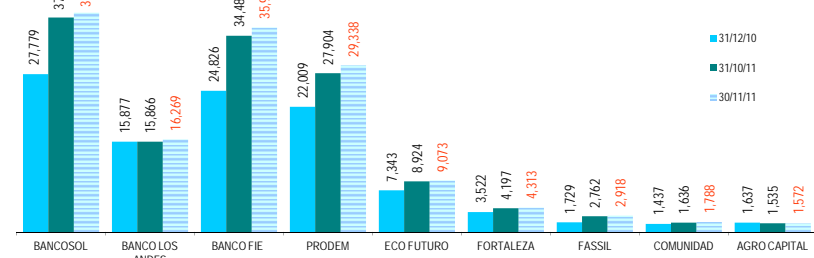
ENTIDAD	MORA SEGUN BALANCE			VARIACION MES		VARIACION Dic/10-Nov/11	
	31/12/10	31/10/11	30/11/11	MONTO	%	MONTO	%
BANCOSOL	3,877	4,210	4,404	194	4.6%	527	13.6%
BANCO LOS ANDES	3,381	3,902	3,546	-356	-9.1%	165	4.9%
BANCO FIE	2,946	3,947	4,117	171	4.3%	1,171	39.7%
PRODEM	4,152	5,416	5,720	304	5.6%	1,568	37.8%
ECO FUTURO	1,903	2,568	2,564	-4	-0.2%	661	34.7%
FORTALEZA	1,917	2,264	2,257	-6	-0.3%	340	17.8%
FASSIL	89	280	279	-1	-0.4%	189	212.4%
COMUNIDAD	0	5	71	66	1313.3%	71	70567.3%
AGRO CAPITAL	247	263	279	16	6.3%	32	12.9%
TOTAL ASOFIN (2)	18,513	22,854	23,237	383	1.7%	4,723	25.5%
BANCOS (1)	107,045	108,815	105,696	-3,119	-2.9%	-1,349	-1.3%
COOP ABIERTAS	9,088	11,523	11,312	-211	-1.8%	2,224	24.5%
MUTUALES	10,804	10,799	10,417	-382	-3.5%	-387	-3.6%

MORA SEGUN BALANCE (MILES DE \$US)



ENTIDAD	PREVISION CONSTITUIDA			VARIACION MES		VARIACION Dic/10-Nov/11	
	31/12/10	31/10/11	30/11/11	MONTO	%	MONTO	%
BANCOSOL	27,779	37,719	38,563	844	2.2%	10,785	38.8%
BANCO LOS ANDES	15,877	15,866	16,269	403	2.5%	392	2.5%
BANCO FIE	24,826	34,480	35,961	1,480	4.3%	11,135	44.9%
PRODEM	22,009	27,904	29,338	1,434	5.1%	7,328	33.3%
ECO FUTURO	7,343	8,924	9,073	149	1.7%	1,729	23.5%
FORTALEZA	3,522	4,197	4,313	116	2.8%	791	22.5%
FASSIL	1,729	2,762	2,918	156	5.6%	1,189	68.8%
COMUNIDAD	1,437	1,636	1,788	152	9.3%	351	24.4%
AGRO CAPITAL	1,637	1,535	1,572	38	2.4%	-65	-4.0%
TOTAL ASOFIN (2)	106,159	135,022	139,794	4,772	3.5%	33,636	31.8%
BANCOS (1)	199,741	233,387	227,214	-6,173	-2.6%	27,473	13.7%
COOP ABIERTAS	37,942	43,078	43,256	178	0.4%	5,314	14.0%
MUTUALES	34,218	32,271	31,677	-595	-1.8%	-2,542	-7.4%

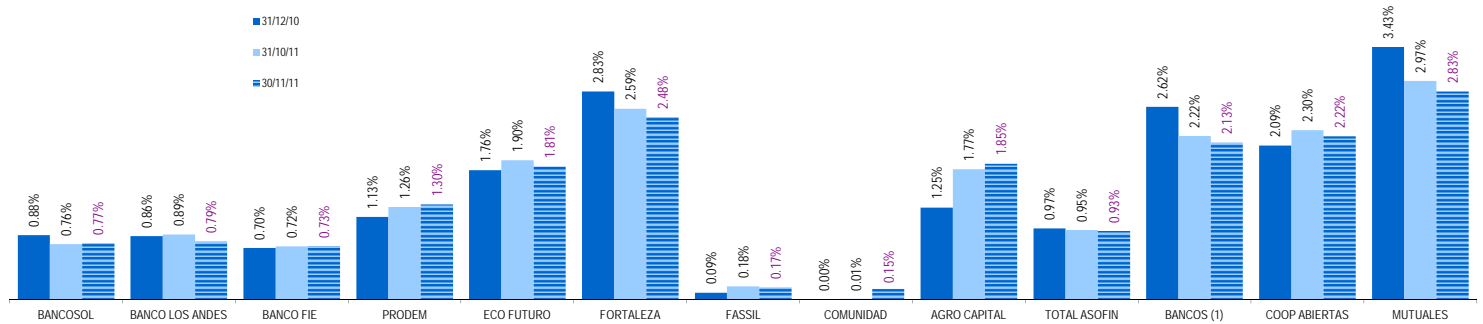
PREVISION CONSTITUIDA (MILES DE \$US)



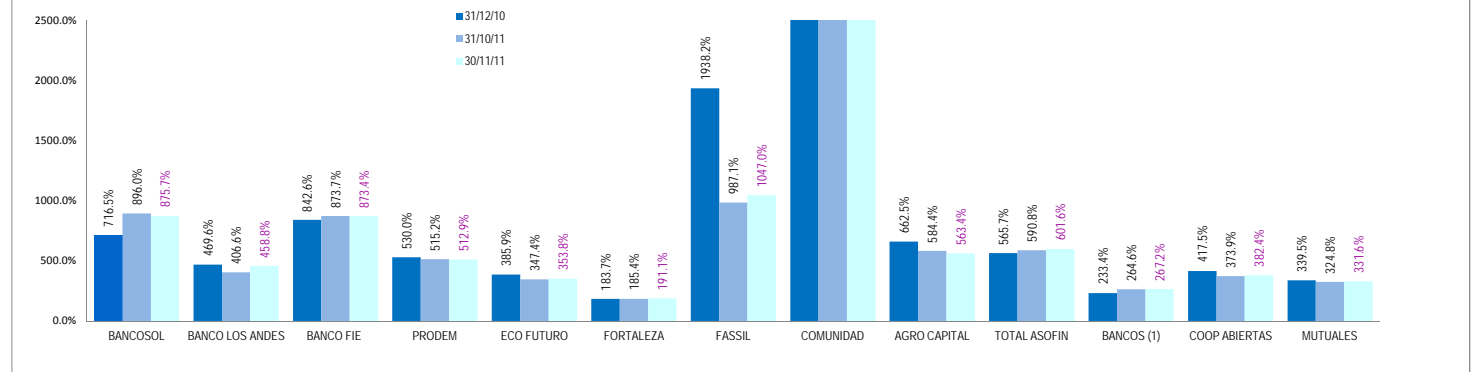
EVOLUCION POR ENTIDAD DE LOS PRINCIPALES INDICADORES, EN %:

ENTIDAD	MORA / CARTERA BRUTA			PREVISION / MORA			RESULTADO / PATRIMONIO		
	31/12/10	31/10/11	30/11/11	31/12/10	31/10/11	30/11/11	31/12/10	31/10/11	30/11/11
BANCOSOL	0.88%	0.76%	0.77%	716.5%	896.0%	875.7%	29.9%	27.5%	27.9%
BANCO LOS ANDES	0.86%	0.89%	0.79%	469.6%	406.6%	458.8%	13.9%	19.1%	18.3%
BANCO FIE	0.70%	0.72%	0.73%	842.6%	873.7%	873.4%	21.8%	22.5%	22.4%
PRODEM	1.13%	1.26%	1.30%	530.0%	515.2%	512.9%	25.2%	31.0%	29.7%
ECO FUTURO	1.76%	1.90%	1.81%	385.9%	347.4%	353.8%	26.8%	30.6%	30.4%
FORTALEZA	2.83%	2.59%	2.48%	183.7%	185.4%	191.1%	19.3%	22.6%	22.6%
FASSIL	0.09%	0.18%	0.17%	1938.2%	987.1%	1047.0%	12.5%	25.0%	24.1%
COMUNIDAD	0.00%	0.01%	0.15%	14365.45%	32710.3%	2529.5%	2.7%	7.6%	7.6%
AGRO CAPITAL	1.25%	1.77%	1.85%	662.5%	584.4%	563.4%	2.4%	0.9%	0.8%
TOTAL ASOFIN	0.97%	0.95%	0.93%	565.7%	590.8%	601.6%	20.8%	24.0%	23.6%
BANCOS (1)	2.62%	2.22%	2.13%	233.4%	264.6%	267.2%	17.1%	18.0%	18.5%
COOP ABIERTAS	2.09%	2.30%	2.22%	417.5%	373.9%	382.4%	8.3%	7.3%	7.7%
MUTUALES	3.43%	2.97%	2.83%	339.5%	324.8%	331.6%	7.5%	6.3%	6.7%

MORA/CARTERA BRUTA (EN %)

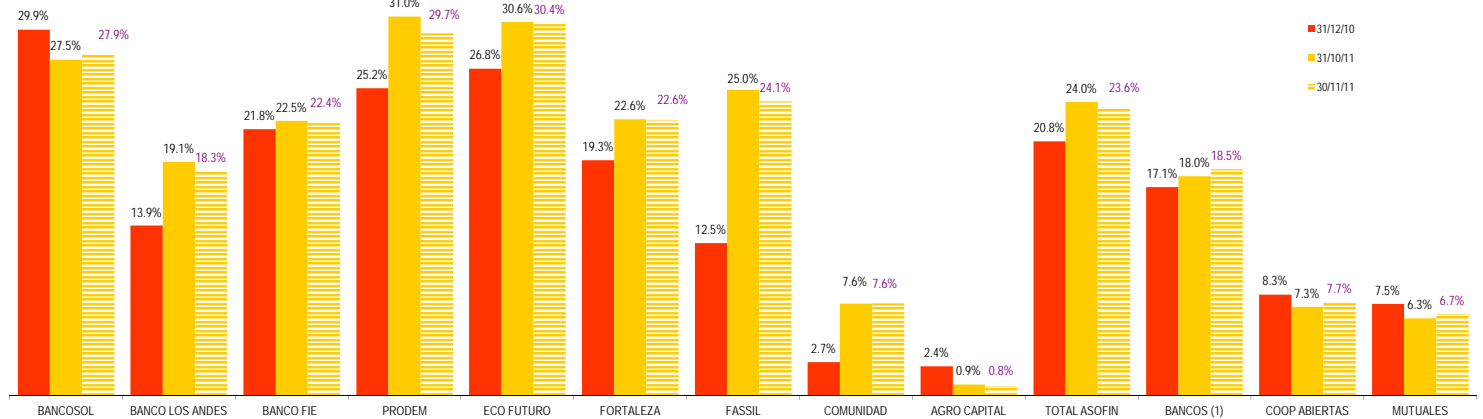


PREVISION/MORA (EN %)



En el caso del Fondo de la Comunidad cuando la cartera en mora es 0, el gráfico del índice de Previsión/Mora no puede ser visualizado en su totalidad, superando el límite superior de dicho gráfico.

ROE



(1) En Bancos no se incluye a BANCOSOL, BANCO LOS ANDES PROCREDIT y BANCO FIE por ser entidades especializadas en microfinanzas

(2) Los datos de Total Asofin a Diciembre/10 incluyen al Fondo de la Comunidad aunque a esa fecha no estaba asociado a nuestro gremio.