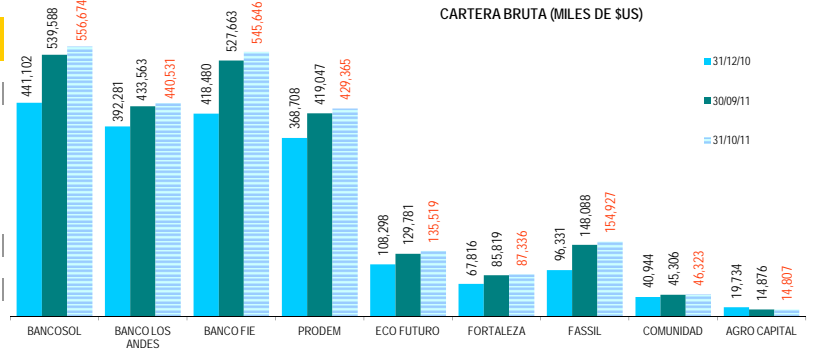


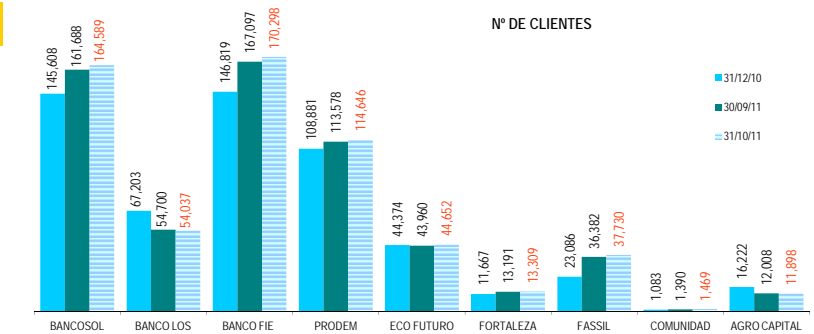
EVOLUCION POR ENTIDAD (CIFRAS EN MILES DE DOLARES)

ENTIDAD	CARTERA BRUTA			VARIACION MES		VARIACION Dic10-Oct11	
	31/12/10	30/09/11	31/10/11	MONTO	%	MONTO	%
BANCOSOL	441,102	539,588	556,674	17,086	3.2%	115,571	26.2%
BANCO LOS ANDES	392,281	433,563	440,531	6,969	1.6%	48,251	12.3%
BANCO FIE	418,480	527,663	545,646	17,983	3.4%	127,166	30.4%
PRODEM	368,708	419,047	429,365	10,317	2.5%	60,656	16.5%
ECO FUTURO	108,298	129,781	135,519	5,738	4.4%	27,221	25.1%
FORTALEZA	67,816	85,819	87,336	1,517	1.8%	19,521	28.8%
FASSIL	96,331	148,088	154,927	6,839	4.6%	58,596	60.8%
COMUNIDAD	40,944	45,306	46,323	1,017	2.2%	5,379	13.1%
AGRO CAPITAL	19,734	14,876	14,807	-68	-0.5%	-4,927	-25.0%
TOTAL ASOFIN (2)	1,953,694	2,343,731	2,411,128	67,397	2.9%	457,434	23.4%
BANCOS (1)	4,084,884	4,864,289	4,890,916	26,627	0.5%	806,031	19.7%
COOP ABIERTAS	434,078	491,837	500,369	8,531	1.7%	66,290	15.3%
MUTUALES	314,560	357,460	363,284	5,825	1.6%	48,725	15.3%



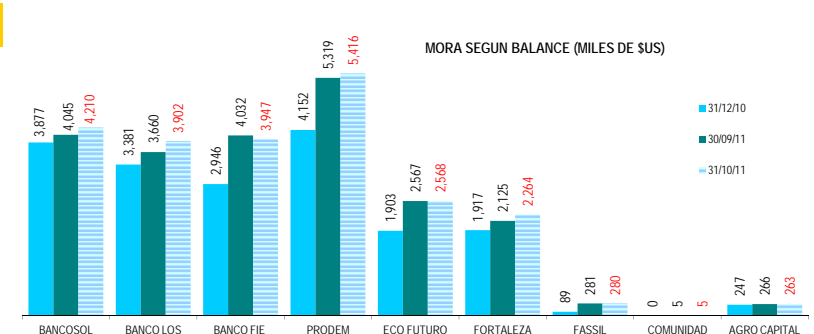
CARTERA BRUTA (MILES DE \$US)

ENTIDAD	N° DE CLIENTES DE CREDITO			VARIACION MES		VARIACION Dic10-Oct11	
	31/12/10	30/09/11	31/10/11	N°	%	N°	%
BANCOSOL	145,608	161,688	164,589	2,901	1.8%	18,981	13.0%
BANCO LOS ANDES	67,203	54,700	54,037	-663	-1.2%	-13,166	-19.6%
BANCO FIE	146,819	167,097	170,298	3,201	1.9%	23,479	16.0%
PRODEM	108,881	113,578	114,646	1,068	0.9%	5,765	5.3%
ECO FUTURO	44,374	43,960	44,652	692	1.6%	278	0.6%
FORTALEZA	11,667	13,191	13,309	118	0.9%	1,642	14.1%
FASSIL	23,086	36,382	37,730	1,348	3.7%	14,644	63.4%
COMUNIDAD	1,083	1,390	1,469	79	5.7%	386	35.6%
AGRO CAPITAL	16,222	12,008	11,898	-110	-0.9%	-4,324	-26.7%
TOTAL ASOFIN (2)	564,943	603,994	612,628	8,634	1.4%	47,685	8.4%
BANCOS (1)	184,827	211,459	S/D	S/D	S/D	S/D	S/D
COOP ABIERTAS	94,760	95,373	S/D	S/D	S/D	S/D	S/D
MUTUALES	19,251	19,831	S/D	S/D	S/D	S/D	S/D



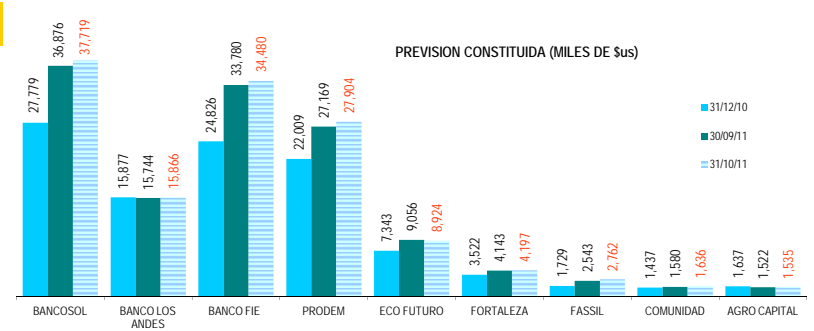
N° DE CLIENTES

ENTIDAD	MORA SEGUN BALANCE			VARIACION MES		VARIACION Dic10-Oct11	
	31/12/10	30/09/11	31/10/11	MONTO	%	MONTO	%
BANCOSOL	3,877	4,045	4,210	164	4.1%	333	8.6%
BANCO LOS ANDES	3,381	3,660	3,902	242	6.6%	521	15.4%
BANCO FIE	2,946	4,032	3,947	-85	-2.1%	1,000	33.9%
PRODEM	4,152	5,319	5,416	97	1.8%	1,264	30.4%
ECO FUTURO	1,903	2,567	2,568	2	0.1%	665	35.0%
FORTALEZA	1,917	2,125	2,264	139	6.5%	347	18.1%
FASSIL	89	281	280	-1	-0.4%	191	213.7%
COMUNIDAD	0	5	5	0	0.0%	5	4900.0%
AGRO CAPITAL	247	266	263	-4	-1.3%	15	6.2%
TOTAL ASOFIN (2)	18,513	22,301	22,854	553	2.5%	4,341	23.4%
BANCOS (1)	107,045	106,165	108,815	2,650	2.5%	1,770	1.7%
COOP ABIERTAS	9,088	11,044	11,523	479	4.3%	2,435	26.8%
MUTUALES	10,804	10,919	10,799	-120	-1.1%	-4	0.0%



MORA SEGUN BALANCE (MILES DE \$US)

ENTIDAD	PREVISION CONSTITUIDA			VARIACION MES		VARIACION Dic10-Oct11	
	31/12/10	30/09/11	31/10/11	MONTO	%	MONTO	%
BANCOSOL	27,779	36,876	37,719	842	2.3%	9,940	35.8%
BANCO LOS ANDES	15,877	15,744	15,866	122	0.8%	-11	-0.1%
BANCO FIE	24,826	33,780	34,480	700	2.1%	9,655	38.9%
PRODEM	22,009	27,169	27,904	736	2.7%	5,895	26.8%
ECO FUTURO	7,343	9,056	8,924	-132	-1.5%	1,581	21.5%
FORTALEZA	3,522	4,143	4,197	54	1.3%	675	19.2%
FASSIL	1,729	2,543	2,762	219	8.6%	1,033	59.7%
COMUNIDAD	1,437	1,580	1,636	56	3.5%	199	13.9%
AGRO CAPITAL	1,637	1,522	1,535	13	0.8%	-103	-6.3%
TOTAL ASOFIN (2)	106,159	132,412	135,022	2,610	2.0%	28,864	27.2%
BANCOS (1)	199,741	221,278	233,387	12,109	5.5%	33,646	16.8%
COOP ABIERTAS	37,942	41,975	43,078	1,103	2.6%	5,136	13.5%
MUTUALES	34,218	32,431	32,271	-159	-0.5%	-1,947	-5.7%

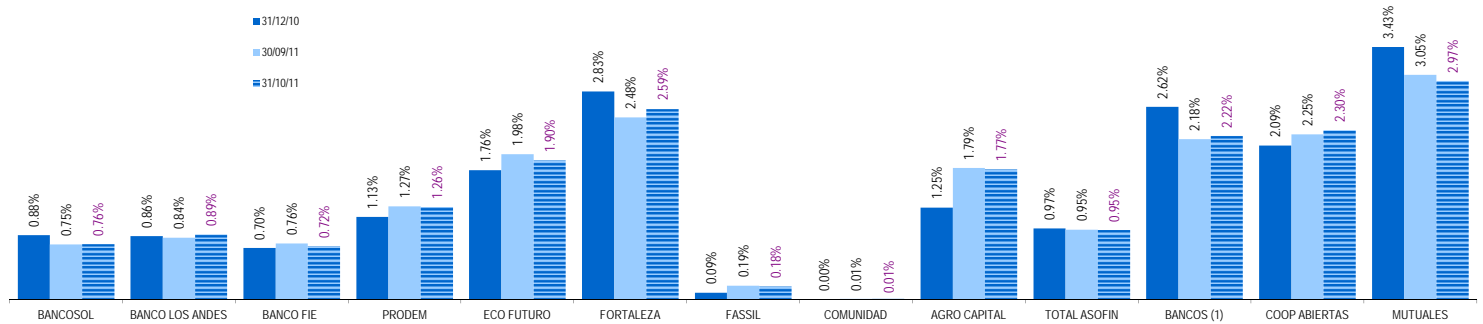


PREVISION CONSTITUIDA (MILES DE \$US)

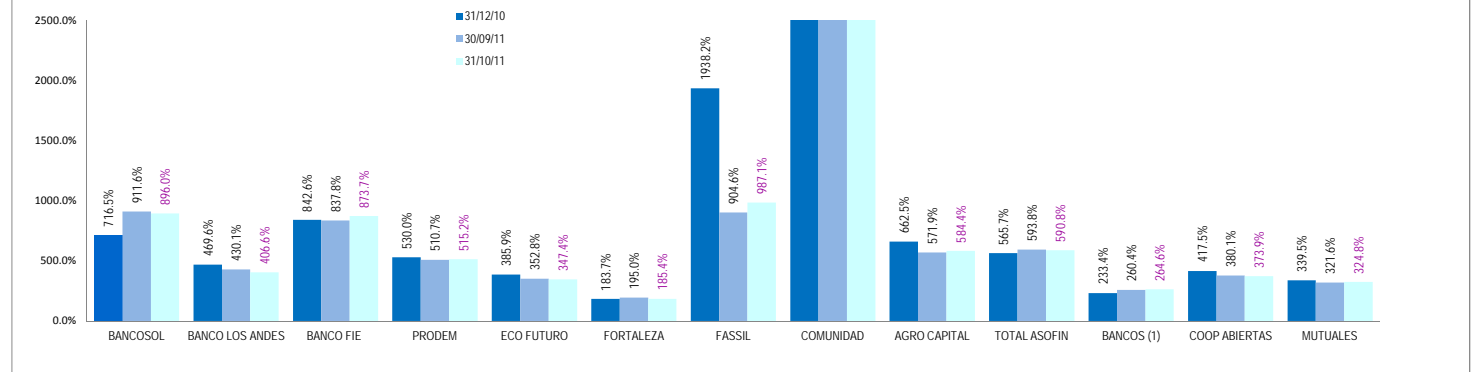
EVOLUCION POR ENTIDAD DE LOS PRINCIPALES INDICADORES, EN %:

ENTIDAD	MORA / CARTERA BRUTA			PREVISION / MORA			RESULTADO / PATRIMONIO		
	31/12/10	30/09/11	31/10/11	31/12/10	30/09/11	31/10/11	31/12/10	30/09/11	31/10/11
BANCOSOL	0.88%	0.75%	0.76%	716.5%	911.6%	896.0%	29.9%	26.9%	27.5%
BANCO LOS ANDES	0.86%	0.84%	0.89%	469.6%	430.1%	406.6%	13.9%	19.4%	19.1%
BANCO FIE	0.70%	0.76%	0.72%	842.6%	837.8%	873.7%	21.8%	22.5%	22.5%
PRODEM	1.13%	1.27%	1.26%	530.0%	510.7%	515.2%	25.2%	31.4%	31.0%
ECO FUTURO	1.76%	1.98%	1.90%	385.9%	352.8%	347.4%	26.8%	28.7%	30.6%
FORTALEZA	2.83%	2.48%	2.59%	183.7%	195.0%	185.4%	19.3%	22.3%	22.6%
FASSIL	0.09%	0.19%	0.18%	1938.2%	904.6%	987.1%	12.5%	25.0%	25.0%
COMUNIDAD	0.00%	0.01%	0.01%	1436545%	31597.8%	32710.3%	2.7%	7.6%	7.6%
AGRO CAPITAL	1.25%	1.79%	1.77%	662.5%	571.9%	584.4%	2.4%	1.0%	0.9%
TOTAL ASOFIN	0.97%	0.95%	0.95%	565.7%	593.8%	590.8%	20.8%	24.0%	24.0%
BANCOS (1)	2.62%	2.18%	2.22%	233.4%	260.4%	264.6%	17.1%	15.9%	18.0%
COOP ABIERTAS	2.09%	2.25%	2.30%	417.5%	380.1%	373.9%	8.3%	8.0%	7.3%
MUTUALES	3.43%	3.05%	2.97%	339.5%	321.6%	324.8%	7.5%	6.3%	6.3%

MORA/CARTERA BRUTA (EN %)

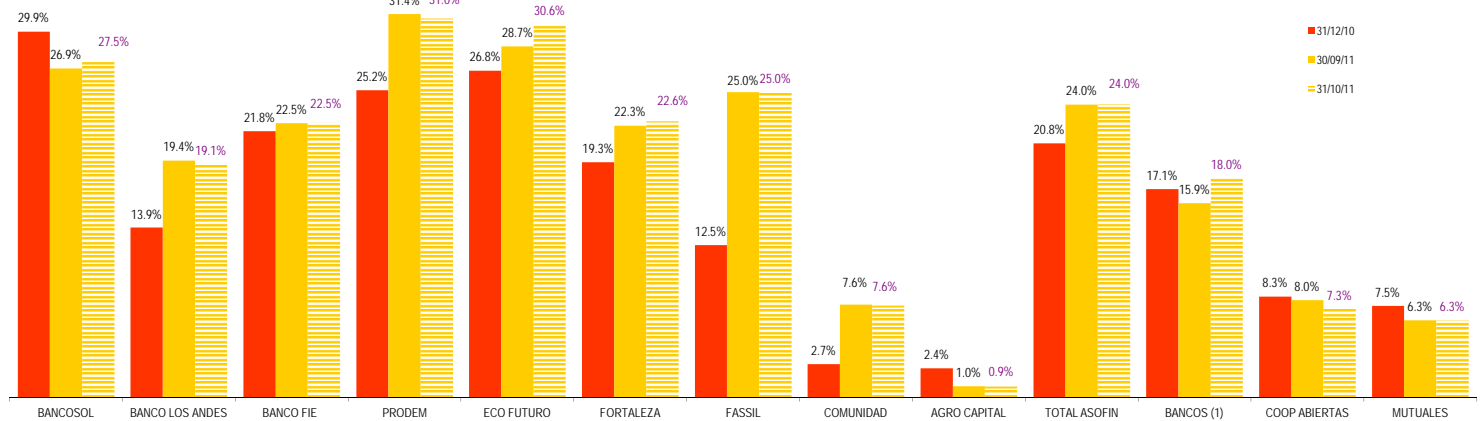


PREVISION/MORA (EN %)



En el caso del Fondo de la Comunidad cuando la cartera en mora es 0, el gráfico del índice de Previsión/Mora no puede ser visualizado en su totalidad, superando el límite superior de dicho gráfico.

ROE



(1) En Bancos no se incluye a BANCOSOL, BANCO LOS ANDES PROCREDIT y BANCO FIE por ser entidades especializadas en microfinanzas

(2) El Monto Total Asofin a Diciembre/10 incluye al Fondo de la Comunidad aunque a esa fecha no estaba asociado a nuestro gremio.