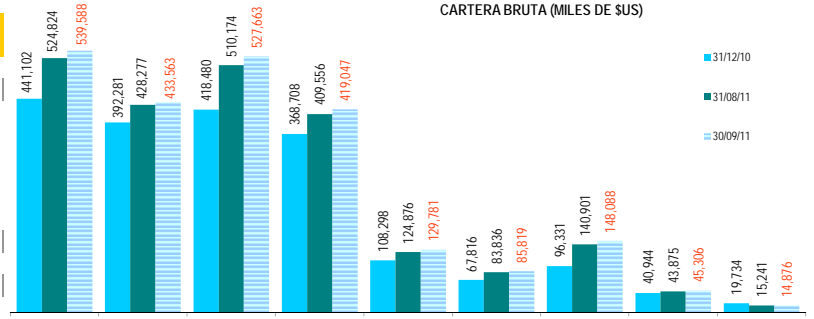


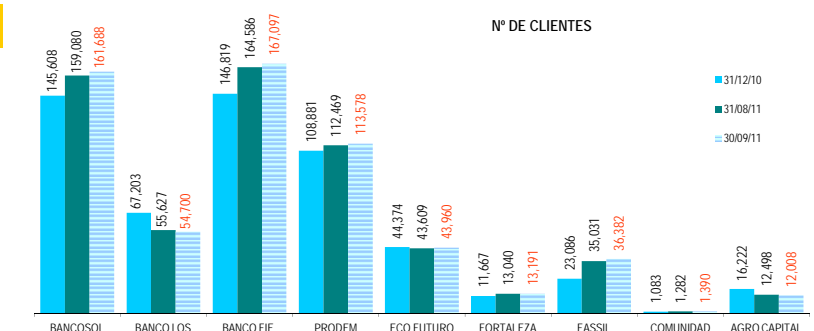
EVOLUCION POR ENTIDAD (CIFRAS EN MILES DE DOLARES)

ENTIDAD	CARTERA BRUTA			VARIACION MES		VARIACION Dic10-Sep11	
	31/12/10	31/08/11	30/09/11	MONTO	%	MONTO	%
BANCOSOL	441,102	524,824	539,588	14,764	2.8%	98,486	22.3%
BANCO LOS ANDES	392,281	428,277	433,563	5,286	1.2%	41,282	10.5%
BANCO FIE	418,480	510,174	527,663	17,489	3.4%	109,183	26.1%
PRODEM	368,708	409,556	419,047	9,491	2.3%	50,339	13.7%
ECO FUTURO	108,298	124,876	129,781	4,904	3.9%	21,483	19.8%
FORTALEZA	67,816	83,836	85,819	1,983	2.4%	18,004	26.5%
FASSIL	96,331	140,901	148,088	7,187	5.1%	51,757	53.7%
COMUNIDAD	40,944	43,875	45,306	1,432	3.3%	4,363	10.7%
AGRO CAPITAL	19,734	15,241	14,876	-366	-2.4%	-4,859	-24.6%
TOTAL ASOFIN (3)	1,953,694	2,281,560	2,343,731	62,171	2.7%	390,037	20.0%
BANCOS (1)	4,084,884	4,799,856	4,864,289	64,433	1.3%	779,405	19.1%
COOP ABIERTAS	434,078	482,942	491,837	8,895	1.8%	57,759	13.3%
MUTUALES	314,560	351,621	357,460	5,839	1.7%	42,900	13.6%



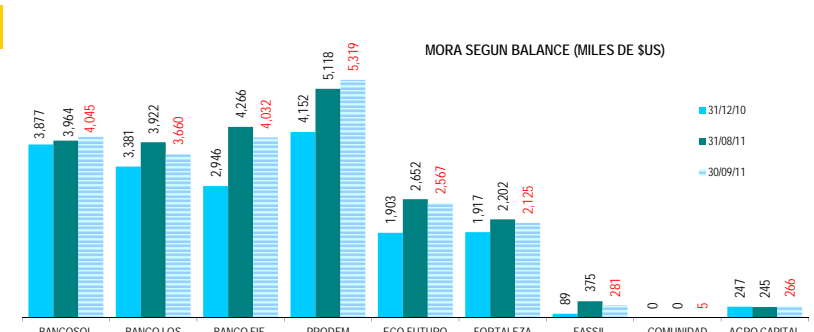
CARTERA BRUTA (MILES DE \$US)

ENTIDAD	N° DE CLIENTES DE CREDITO			VARIACION MES		VARIACION Dic10-Sep11	
	31/12/10	31/08/11	30/09/11	N°	%	N°	%
BANCOSOL	145,608	159,080	161,688	2,608	1.6%	16,080	11.0%
BANCO LOS ANDES	67,203	55,627	54,700	-927	-1.7%	-12,503	-18.6%
BANCO FIE	146,819	164,586	167,097	2,511	1.5%	20,278	13.8%
PRODEM	108,881	112,469	113,578	1,109	1.0%	4,697	4.3%
ECO FUTURO	44,374	43,609	43,960	351	0.8%	-414	-0.9%
FORTALEZA	11,667	13,040	13,191	151	1.2%	1,524	13.1%
FASSIL	23,086	35,031	36,382	1,351	3.9%	13,296	57.6%
COMUNIDAD	1,083	1,282	1,390	108	8.4%	307	28.3%
AGRO CAPITAL	16,222	12,498	12,008	-490	-3.9%	-4,214	-26.0%
TOTAL ASOFIN (2)	564,943	597,222	603,994	6,772	1.1%	39,051	6.9%
BANCOS (1)	184,827	S/D	211,459	S/D	S/D	S/D	S/D
COOP ABIERTAS	94,760	S/D	95,373	S/D	S/D	S/D	S/D
MUTUALES	19,251	S/D	19,831	S/D	S/D	S/D	S/D



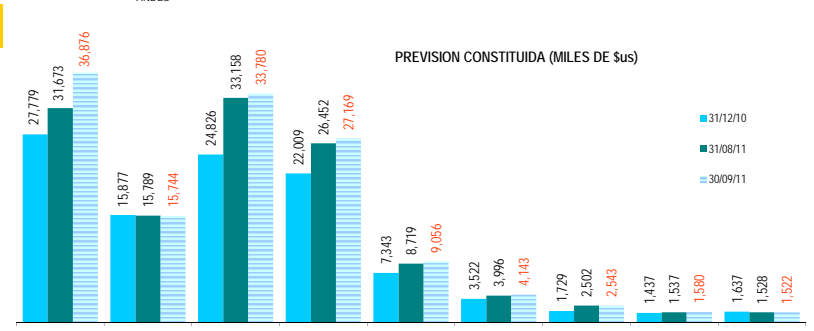
N° DE CLIENTES

ENTIDAD	MORA SEGUN BALANCE			VARIACION MES		VARIACION Dic10-Sep11	
	31/12/10	31/08/11	30/09/11	MONTO	%	MONTO	%
BANCOSOL	3,877	3,964	4,045	81	2.1%	169	4.3%
BANCO LOS ANDES	3,381	3,922	3,660	-262	-6.7%	279	8.3%
BANCO FIE	2,946	4,266	4,032	-234	-5.5%	1,086	36.8%
PRODEM	4,152	5,118	5,319	202	3.9%	1,167	28.1%
ECO FUTURO	1,903	2,652	2,567	-86	-3.2%	663	34.9%
FORTALEZA	1,917	2,202	2,125	-77	-3.5%	208	10.8%
FASSIL	89	375	281	-94	-25.0%	192	215.1%
COMUNIDAD	0	0	5	5	4900.0%	5	4900.0%
AGRO CAPITAL	247	245	266	21	8.7%	19	7.7%
TOTAL ASOFIN (2)	18,513	22,743	22,301	-442	-1.9%	3,787	20.5%
BANCOS (1)	107,045	104,826	106,165	1,339	1.3%	-880	-0.8%
COOP ABIERTAS	9,088	11,152	11,044	-108	-1.0%	1,956	21.5%
MUTUALES	10,804	10,771	10,919	148	1.4%	115	1.1%



MORA SEGUN BALANCE (MILES DE \$US)

ENTIDAD	PREVISION CONSTITUIDA			VARIACION MES		VARIACION Dic10-Sep11	
	31/12/10	31/08/11	30/09/11	MONTO	%	MONTO	%
BANCOSOL	27,779	31,673	36,876	5,204	16.4%	9,098	32.8%
BANCO LOS ANDES	15,877	15,789	15,744	-45	-0.3%	-133	-0.8%
BANCO FIE	24,826	33,158	33,780	622	1.9%	8,954	36.1%
PRODEM	22,009	26,452	27,169	717	2.7%	5,159	23.4%
ECO FUTURO	7,343	8,719	9,056	337	3.9%	1,712	23.3%
FORTALEZA	3,522	3,996	4,143	147	3.7%	621	17.6%
FASSIL	1,729	2,502	2,543	41	1.6%	144	47.1%
COMUNIDAD	1,437	1,537	1,580	43	2.8%	813	10.0%
AGRO CAPITAL	1,637	1,528	1,522	-6	-0.4%	-115	-7.0%
TOTAL ASOFIN (2)	106,159	125,353	132,412	7,059	5.6%	26,254	24.7%
BANCOS (1)	199,741	217,859	221,278	3,420	1.6%	21,537	10.8%
COOP ABIERTAS	37,942	41,631	41,975	344	0.8%	4,033	10.6%
MUTUALES	34,218	32,566	32,431	-135	-0.4%	-1,788	-5.2%

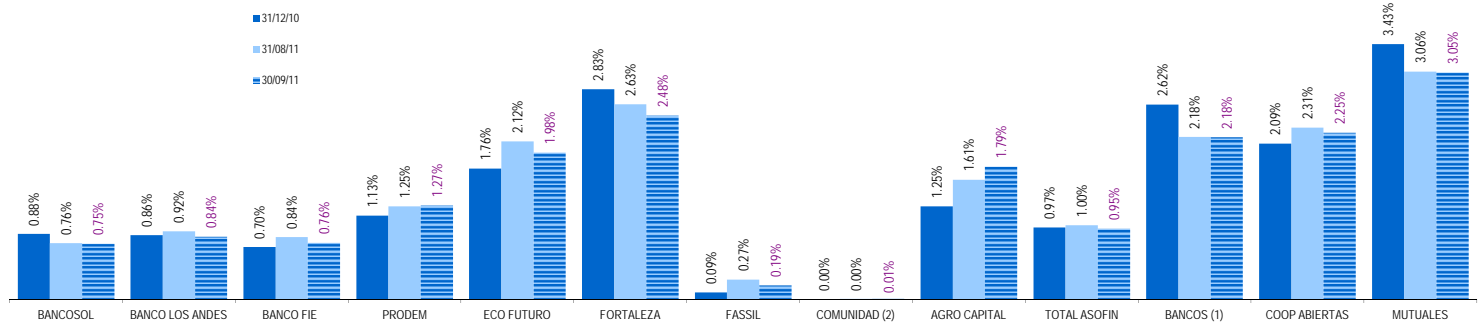


PREVISION CONSTITUIDA (MILES DE \$US)

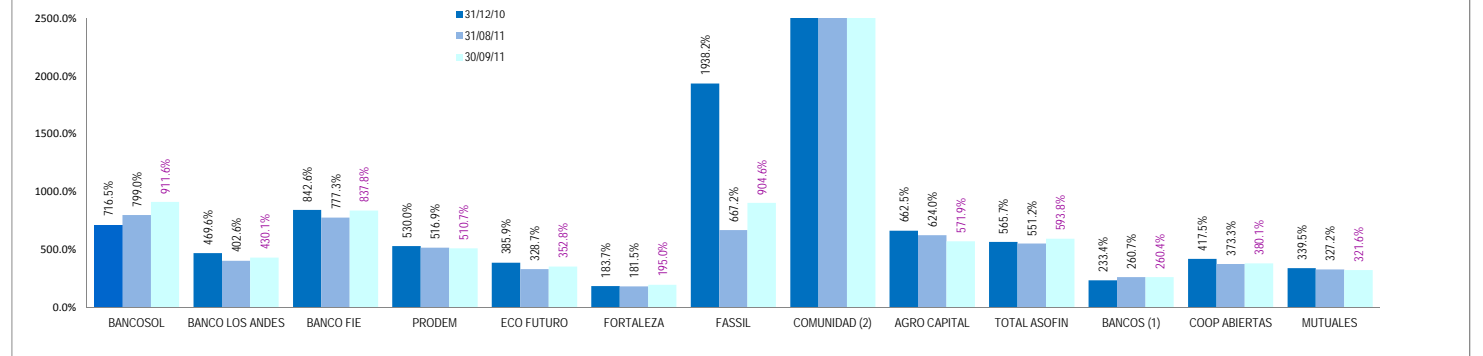
EVOLUCION POR ENTIDAD DE LOS PRINCIPALES INDICADORES, EN %:

ENTIDAD	MORA / CARTERA BRUTA			PREVISION / MORA			RESULTADO / PATRIMONIO		
	31/12/10	31/08/11	30/09/11	31/12/10	31/08/11	30/09/11	31/12/10	31/08/11	30/09/11
BANCOSOL	0.88%	0.76%	0.75%	716.5%	799.0%	911.6%	29.9%	30.2%	26.9%
BANCO LOS ANDES	0.86%	0.92%	0.84%	469.6%	402.6%	430.1%	13.9%	19.6%	19.4%
BANCO FIE	0.70%	0.84%	0.76%	842.6%	777.3%	837.8%	21.8%	22.5%	22.5%
PRODEM	1.13%	1.25%	1.27%	530.0%	516.9%	510.7%	25.2%	31.1%	31.4%
ECO FUTURO	1.76%	2.12%	1.98%	385.9%	328.7%	352.8%	26.8%	29.2%	28.7%
FORTALEZA	2.83%	2.63%	2.48%	183.7%	181.5%	195.0%	19.3%	23.0%	22.3%
FASSIL	0.09%	0.27%	0.19%	1938.2%	667.2%	904.6%	12.5%	25.0%	25.0%
COMUNIDAD (2)	0.00%	0.00%	0.01%	1436545%	1537011.8%	31597.8%	2.7%	7.7%	7.6%
AGRO CAPITAL	1.25%	1.61%	1.79%	662.5%	624.0%	571.9%	2.4%	0.9%	1.0%
TOTAL ASOFIN	0.97%	1.00%	0.95%	565.7%	551.2%	593.8%	20.8%	24.6%	24.0%
BANCOS (1)	2.62%	2.18%	2.18%	233.4%	260.7%	260.4%	17.1%	16.1%	15.9%
COOP ABIERTAS	2.09%	2.31%	2.25%	417.5%	373.3%	380.1%	8.3%	7.4%	8.0%
MUTUALES	3.43%	3.06%	3.05%	339.5%	327.2%	321.6%	7.5%	6.4%	6.3%

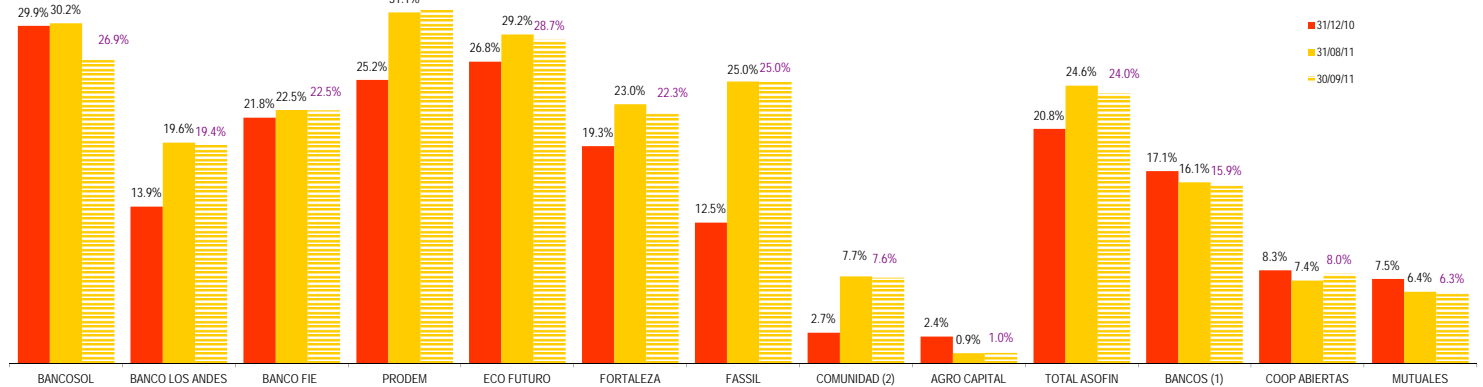
MORA/CARTERA BRUTA (EN %)



PREVISION/MORA (EN %)



ROE



(1) En Bancos no se incluye a BANCOSOL, BANCO LOS ANDES, PROCREDIT y BANCO FIE por ser entidades especializadas en microfinanzas

(2) En el caso del Fondo de la Comunidad cuando la cartera en mora es 0, el gráfico del índice de Previsión/Mora no puede ser visualizado en su totalidad, superando el límite superior de dicho gráfico.

(3) El Monto Total Asofin a Diciembre/10 incluye al Fondo de la Comunidad aunque a esa fecha no estaba asociado a nuestro gremio.